

ADVANCED JET AJ-1000/AJ-740

SOLJET PRO III XJ-740/XJ-640

Specifications	ADVANCED JET		SOLJET PRO III	
	AJ-1000	AJ-740	XJ-740	XJ-640
Printing technology	Piezoelectric inkjet		Piezoelectric inkjet	
Media	Width	1220 to 2641 mm (48 to 104 in.)	210 to 1879 mm (8.3 to 74 in.)	210 to 1625 mm (8.3 to 64 in.)
	Thickness	Maximum 1.0 mm (39 mil) with liner	Maximum 1.0 mm (39 mil) with liner	Maximum 1.0 mm (39 mil) with liner
	Roll outer diameter	Maximum 250 mm (9.8 in.)	Maximum 250 mm (9.8 in.)	Maximum 210 mm (8.3 in.)
	Roll weight	Maximum 100 kg (220 lb.)	Maximum 100 kg (220 lb.)	Maximum 47 kg (103 lb.)
Printing width *1	Core diameter	76.2 mm (3 in.)	76.2 mm (3 in.) or 50.8 mm (2 in.)	Maximum 40 kg (88 lb.)
	Types	Maximum 2600 mm (102.3 in.)	Maximum 1870 mm (73.6 in.)	Maximum 1869 mm (73.6 in.)
Ink cartridges	Capacity	Roland EcoXtreme/EcoXtreme LT cartridge		Roland ECO-SOL MAX cartridge
	Colors	6 colors (cyan, magenta, yellow, black, light cyan, and light magenta)		220 cc or 440 cc
Printing resolution (dots per inch)	Distance accuracy *2	Error of less than ±0.3% of distance traveled, or ±0.3 mm, whichever is greater		Error of less than ±0.3% of distance traveled, or ±0.3 mm, whichever is greater
	Media heating system *3	Preheater and print heater, setting range for the preset temperature: 35 to 50°C (95 to 122°F) Heating method: (Used in combination with the blower fan), setting range for the preset temperature: 35 to 60°C (95 to 140°F)		Print heater, setting range for the preset temperature: 30 to 45°C (86 to 112°F) Heating method: (Used in combination with the blower fan), setting range for the preset temperature: 30 to 50°C (86 to 122°F)
Media take-up system	Roll outer diameter	Maximum 250 mm (9.8 in.)	Maximum 250 mm (9.8 in.)	Maximum 250 mm (9.8 in.)
	Roll weight	Maximum 100 kg (220 lb.)	Maximum 100 kg (220 lb.)	Maximum 50 kg (110 lb.)
Connectivity	Power-saving function	Ethernet (10BASE-T/100BASE-TX, automatic switching)		Ethernet (10BASE-T/100BASE-TX, automatic switching)
	Power requirements	Printer: AC 200 to 240 V ±10%, 10 A, 50/60 Hz Dryer: AC 200 to 240 V ±10%, 10 A, 50/60 Hz		AC 100 to 120 V ±10%, 13 A, 50/60 Hz or AC 220 to 240 V ±10%, 7 A, 50/60 Hz
Power consumption	During operation	Printer: Approx. 1000 W Dryer: Approx. 2300 W	Printer: Approx. 1100 W Dryer: Approx. 1620 W	Approx. 1600 W
	Sleep mode	Approx. 60 W		Approx. 47 W
Acoustic noise level	During operation	70 dB (A) or less (according to ISO 7779)	64 dB (A) or less (according to ISO 7779)	64 dB (A) or less (according to ISO 7779)
	During standby	40 dB (A) or less (according to ISO 7779)	45 dB (A) or less (according to ISO 7779)	45 dB (A) or less (according to ISO 7779)
Dimensions (with stand)	Weight (with stand)	4299 (W) x 1115 (D) x 1413 (H) mm (169.3 (W) x 43.9 (D) x 55.7 (H) in.)	3632 (W) x 1115 (D) x 1359 (H) mm (143 (W) x 43.9 (D) x 53.5 (H) in.)	3169 (W) x 1103 (D) x 1260 (H) mm (124.8 (W) x 43.4 (D) x 49.6 (H) in.)
	Weight (with stand)	478 kg (1059 lb.)	478 kg (1059 lb.)	225 kg (495 lb.)
Environmental	Power on	Temperature: 20 to 32°C (68 to 89.6°F) humidity: 35 to 80% (no condensation)		Temperature: 15 to 32°C (59 to 90°F) (20°C [68°F] or more recommended), humidity: 35 to 80%RH (non-condensing)
	Power off	Temperature: 5 to 40°C (41 to 104°F), humidity: 20 to 80% (no condensation)		Temperature: 5 to 40°C (41 to 104°F), humidity: 20 to 80%RH (non-condensing)
Accessories	Power cords, roll shafts, end caps, spacers, media reinforcement pipe, paper tube, drain bottle, media gauge, media clamps, hexagonal wrenches, Head-unit tool, cleaning kit, syringe, tube, maintenance liquid cartridge, software RIP, Roland-PrintServer CD-ROM, User's Manual, Setup Guide, Roland-PrintServer Network Settings Guide		Stand, power cord, media clamps, media flanges, replacement blade for separating knife, cleaning kit, software RIP, and User's Manual, etc.	

*1 The length of printing is subject to the limitations of the program.
*2 At Roland PET film, print travel: 1 m, temperature: 25°C (77°F), humidity: 50%, not assured when the print heater or dryer is used.
*3 Warm-up is required after power-on. This may require 5 to 20 minutes, depending on the operating environment. Depending on the ambient temperature and media width, it may not reach a preset temperature.

Roland VersaWorks System Requirements

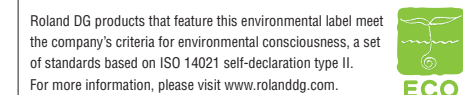
Operating system	Windows Vista™ Ultimate or Business (32-bit edition), or Windows® XP Professional Service Pack 2, or Windows® 2000 Service Pack 4
CPU	Pentium 4, 2.0 GHz or faster recommended
RAM	1 GB or more recommended
Free hard-disk space	40 GB or more recommended

Options for SOLJET PRO III XJ-740/XJ-640

SPVCB-1270	PVC banner, 1270 mm x 20 m (50' x 65')
SVB-B-1270	PVC banner, blackout, 1270 mm x 20 m (50' x 65')
SP-M-1270	Matte PET film, 1270 mm x 30 m (50' x 98')
SFPLF-1300	Backlit film, 1300 mm x 30 m (51'-10" x 98')
ECO-SOL MEDIA	SCM-GBMW-50-1180 Polyethylene banner, 1180 mm x 50 m (46'-7 1/8" x 164')
	SCM-SPPS-50-914 White glossy photo paper, 914 mm x 50 m (36" x 164')
	SCM-SPPS-50-1270 White glossy photo paper, 1270 mm x 50 m (50' x 164')
	SCM-GVWG-40-1370 Monomeric calendared self adhesive vinyl white glossy-permanent adhesive, 1370 mm x 40 m (53'-7 7/8" x 131')
	SCM-GVWG-40-1525 Monomeric calendared self adhesive vinyl white glossy-permanent adhesive, 1525 mm x 40 m (60' x 131')
ESL3-4MG	Magenta, 440 cc
ESL3-4YE	Yellow, 440 cc
ESL3-4CY	Cyan, 440 cc
ESL3-4BK	Black, 440 cc
ESL3-4LC	Light cyan, 440 cc
ESL3-4LM	Light magenta, 440 cc
ECO-SOL MAX Ink	ESL3-MG Magenta, 220 cc
	ESL3-YE Yellow, 220 cc
	ESL3-CY Cyan, 220 cc
	ESL3-BK Black, 220 cc
	ESL3-LC Light cyan, 220 cc
	ESL3-LM Light magenta, 220 cc
Cleaning liquid	SL-LC 1 pc. 1000 cc For AJ-740
Heater and blower	DU-640 For XJ-640

Options for Advanced JET AJ-1000/AJ-740

Mesh Printing Unit	MU-1000 For AJ-1000
	MU-740 For AJ-740
EcoXtreme Ink	AI-MG Magenta, 1000 cc
	AI-YE Yellow, 1000 cc
	AI-CY Cyan, 1000 cc
	AI-BK Black, 1000 cc
	AI-LC Light cyan, 1000 cc
	AI-LM Light magenta, 1000 cc
EcoXtreme LT Ink	AJ2-MG Magenta, 1000 cc
	AJ2-YE Yellow, 1000 cc
	AJ2-CY Cyan, 1000 cc
	AJ2-BK Black, 1000 cc
	AJ2-LC Light cyan, 1000 cc
	AJ2-LM Light magenta, 1000 cc
Cleaning liquid	AI-LC 1 pc. 1000 cc For AJ-740
Maintenance liquid	AI-ML 1 pc. 500 cc For AJ-740



ISO 14001:2004 and ISO 9001:2000 Certified Roland pursues both environmental protection and continuous quality improvement. Under the philosophy of preserving the environment and human health, Roland is actively working to abolish organic solvents in production, to reduce and recycle waste, to reduce power use, and to purchase recycled products. Roland constantly strives to provide the most highly reliable products available.



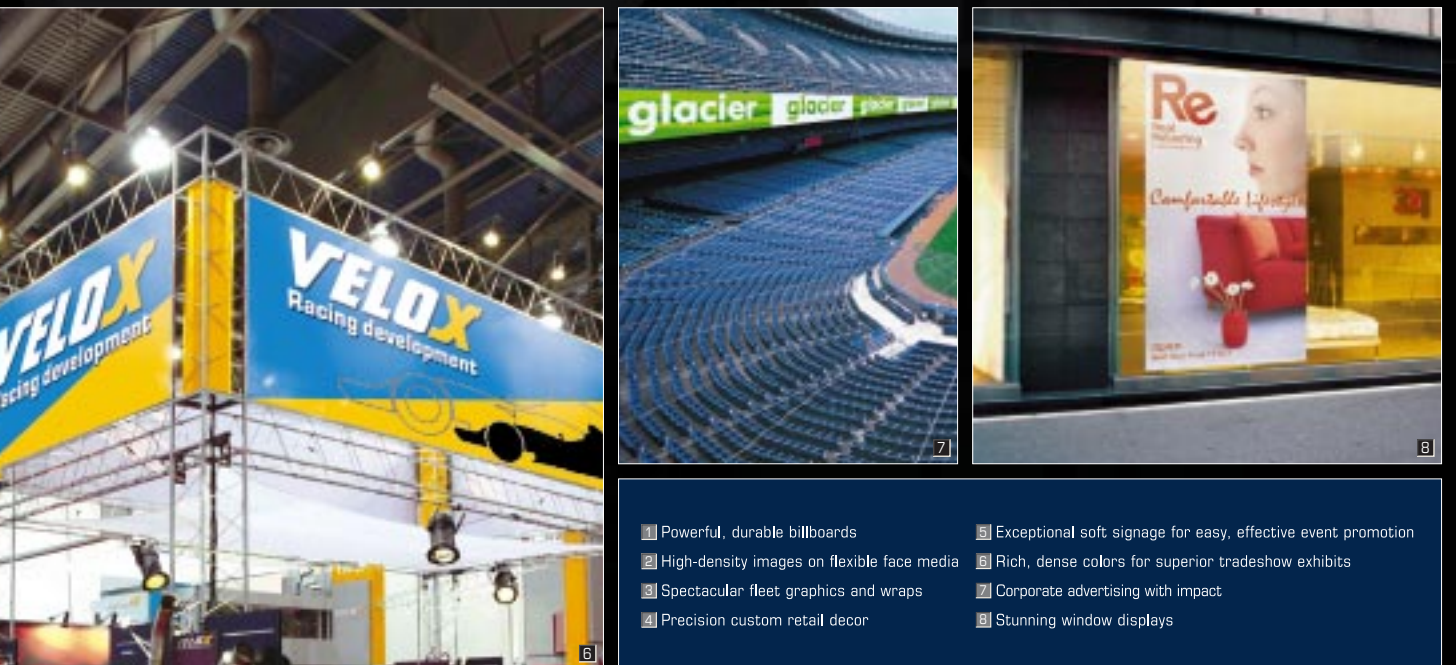
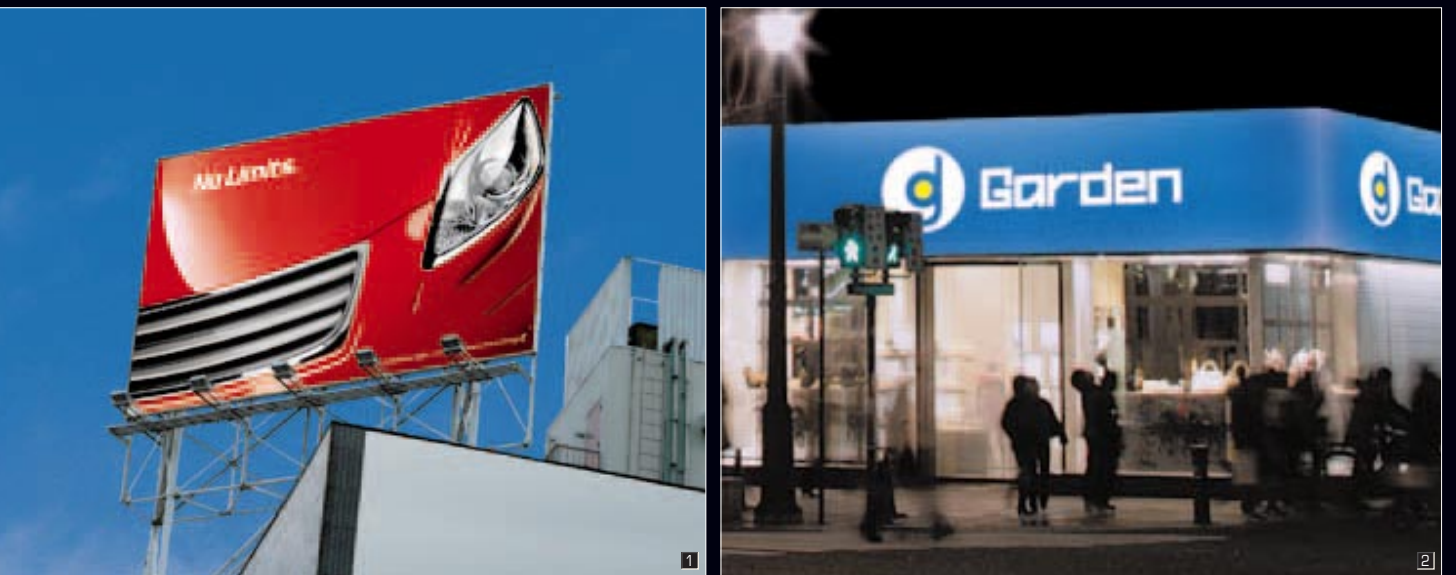
Roland DG products that feature this environmental label meet the company's criteria for environmental consciousness, a set of standards based on ISO 14001 self-declaration type II. For more information, please visit www.rolanddg.com.



AUTHORIZED DEALER: Printed in Japan. RDG-41600909 '07 AUG. A-4 G-S



- 1 Photorealistic skin tones
- 2 Beautiful outdoor banners
- 3 Flawless fine art giclees
- 4 Vivid color backlits
- 5 Custom wall coverings
- 6 Bold, colorful POP displays
- 7 High-impact event posters
- 8 Durable outdoor signs



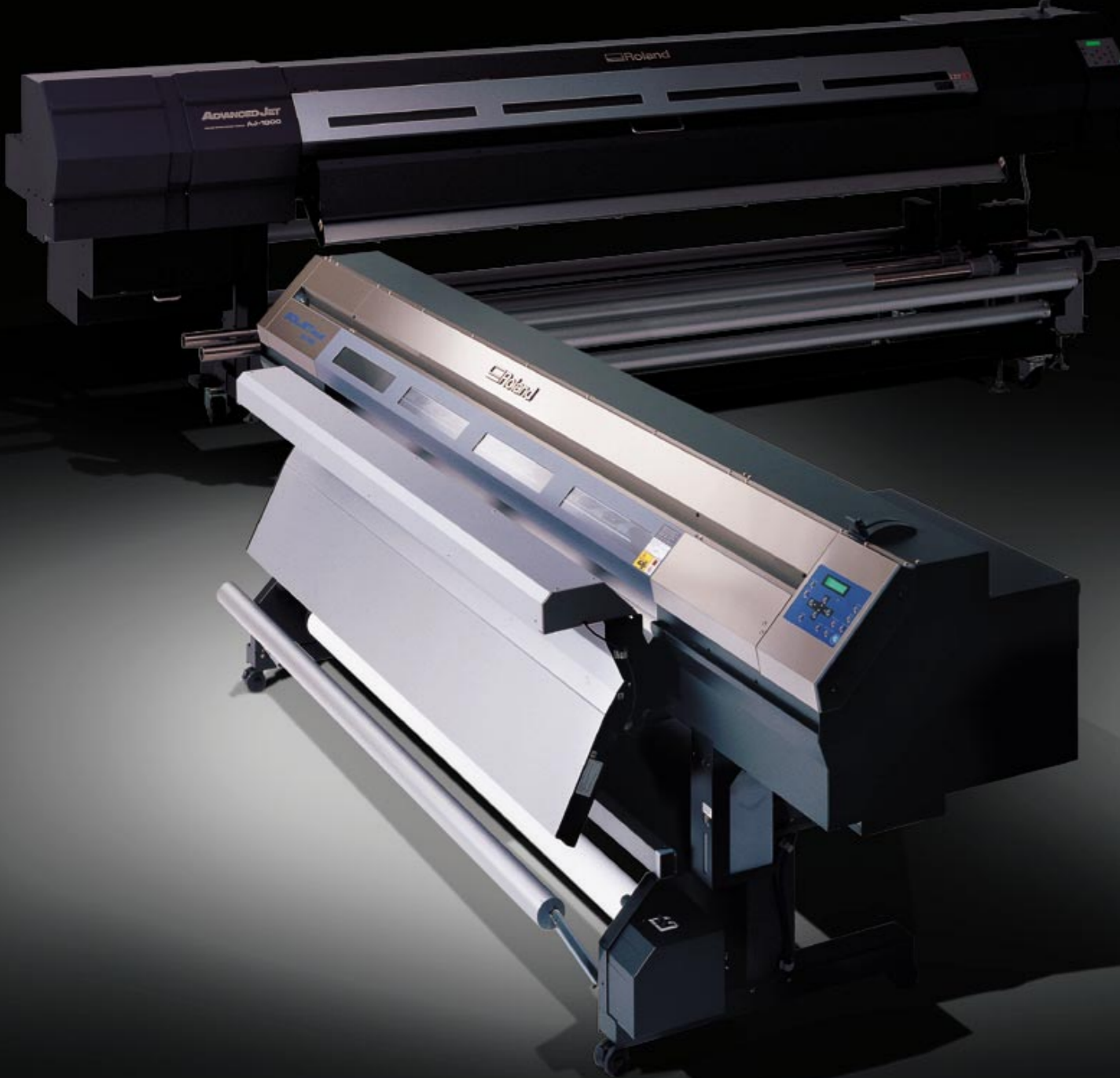
- 1 Powerful, durable billboards
- 2 High-density images on flexible face media
- 3 Spectacular fleet graphics and wraps
- 4 Precision custom retail decor
- 5 Exceptional soft signage for easy, effective event promotion
- 6 Rich, dense colors for superior tradeshow exhibits
- 7 Corporate advertising with impact
- 8 Stunning window displays

With Rich, Vivid Color

Powerful Performance

Exceptional Speed and Image Quality

The SOLJET PRO III XJ series is offered in 64" and 74" models, combining high-speed performance and superior image quality for the ultimate in six- or four-color digital printing.



SOLJET PRO III
XJ-740/XJ-640

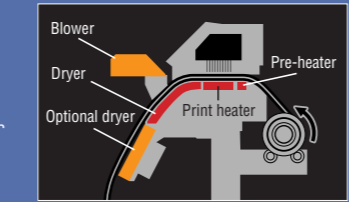
SOLJET PRO III

Optimum Productivity and Low Running Costs

Available in 64" and 74" models, the six-color (CMYKLaLm) or four-color (CCMMYK) XJ series builds on Roland's renowned SOLJET technology to achieve exceptional image quality at higher print speeds. With a maximum print speed of 42.6m²/hr (458.61sqft/hr), the XJ is designed for production printing of indoor and outdoor graphics including banners, signs, point of purchase displays, vehicle graphics, backlit displays, event graphics and more. The XJ series supports a wide variety of media including vinyl, banner, photo paper, poster paper and canvas. For even greater productivity, the XJ features an automated maintenance system that saves valuable ink and time, resulting in lower overall running costs. The XJ's in-line print head configuration eliminates the need for lengthy calibration procedures as well.

Outstanding Visual Impact

The XJ series prints at up to 1440 x 1440 dpi resolution in dense, rich colors for indoor and outdoor graphics that look great up close and at a distance. The XJ has been optimized to achieve unparalleled image quality in every print mode and produces flawless skin tones, high-contrast images, and solid colors with no traces of banding even at the highest print speeds. A built-in tri-heater system increases media receptiveness for maximum ink brightness and fastness.



Exceptional Print Quality with ECO-SOL MAX Ink

ECO-SOL MAX eco-solvent ink delivers high color density and a wide gamut for exceptional images print after print. ECO-SOL MAX performs on a wide range of both coated and uncoated media, including backlit film, for increased versatility. Fast-drying and scratch-resistant, ECO-SOL MAX produces prints that dry quickly for easy handling throughout the production and finishing processes. Packaged in no-mess 220 and 440 cc cartridges, ECO-SOL MAX is virtually odorless for maximum convenience and comfort.



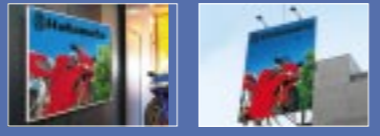
Added Features for Maximum Performance

The XJ series offers numerous advanced features for high-volume printing. Rigid construction and a heavy-duty take-up system support large media rolls weighing up to 47kg (103.6lbs). Easy access media shafts make it convenient to load even the heaviest media. Additional system enhancements include new pinch rollers, grit rollers and additional grit power for flawless media feeding and tracking. Extended built-in media edge clamps prevent media curling and ragged edges. New media flanges are included as well for precision media tracking through long unattended production runs. A high-speed network board supports rapid data transfers, and an optional dryer/blower unit further expedites the production process.



Powerful VersaWorks RIP Software

Included in both the AJ and XJ series, Roland VersaWorks RIP was written from the ground up to be easy to use while offering advanced features including the new Max Impact color management preset, the Roland Color System for precision spot color matching, and Variable Data Printing for easy, custom prints with variable data.



Default preset features fine gradations for close-up viewing. Max Impact provides vivid colors for outdoor signs.

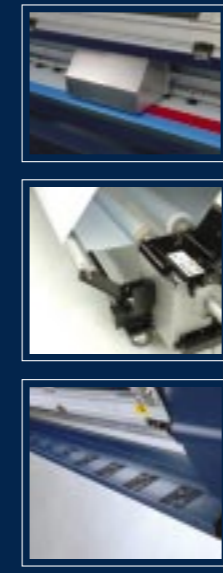
The Max Impact preset produces deeper, more vivid blues and reds, the fundamental colors for outdoor graphics, while preserving the overall color balance required for beautiful, photorealistic images. Or you can choose the default preset to faithfully reproduce human skin tones, pastel as well as natural colors, and metallic surfaces with superb gradations. Built on an Adobe Postscript engine, VersaWorks includes a wide variety of layout, edit and print functions, and allows users to import files from popular design programs and preview jobs on screen. VersaWorks also includes more than 150 ICC profiles for reliable results the first time and every time. The Roland@NET automated update feature ensures ongoing access to the latest VersaWorks version and profiles available.

Roland VersaWorks



High-Speed Performance

The Roland AdvancedJET AJ series is the fastest printer line in its class and the perfect production tool for high-volume printing and rush jobs. The AJ produces billboards, banners, fleet and vehicle graphics, and point of purchase displays at a maximum print speed of up to 90m²/hr (968 sqft/hr). With 72mm-wide heads, 510 nozzles per line and 35pl per dot, the AJ offers superior image quality at 45m²/hr (484 sqft/hr). Additional performance features, including a heavy-duty tension-controlled take-up system for rolls weighing up to 100kg (220 lbs), make the AJ ideal for long production runs and unattended printing. The AJ also comes equipped with high-capacity 1-liter ink cartridges and an advanced ink delivery system that allows replacement of cartridges without pausing. A powerful drying system quickly dries ink and media for high-speed applications.



EcoXtreme inks offer exceptional bonding with uncoated banner substrates and tarpaulin, as well as enhanced scratch and alcohol resistance for outstanding outdoor durability.



Minimum Maintenance and Ownership Costs

The price and installation costs of many wide and grand-format printers can run several hundred thousand dollars. By comparison, an AJ printer can be purchased and installed for a fraction of this cost. Operational costs for the AJ are lower as well due to an innovative automated intelligent maintenance system that saves ink and reduces down time. This advanced system performs routine maintenance tasks automatically, eliminating the need for time-consuming daily manual cleanings. The AJ's intelligent maintenance system even adjusts the maintenance schedule automatically depending on the room temperature. As a result, manual cleaning around the print head and capping station is required only every two weeks.

Convenient Optional Mesh Printing Unit

The AJ's versatility can be further enhanced with the optional MU Mesh Printing Unit for economical unlined mesh media. Custom engineered for the AJ, the MU is easy to attach and detach and features a built-in drainage system for easy removal of excess ink. Popular for a variety of indoor and outdoor applications, mesh is particularly well suited for graphics that may be exposed to excessive wind or any graphic calling for a unique sheer look. Unlined mesh offers many advantages over lined mesh including a lower cost per square meter. In addition, unlined mesh is easier to print, handle and transport, and it does not generate liner waste.



Superior Image Quality

With a maximum print resolution of 720 x 720 dpi, the AJ series produces brilliant six-color CMYKLaLm graphics with superior ink bonding, scratch resistance and alcohol resistance. For optimum performance across a wide range of media, the AJ features three print head heights that can be easily adjusted. The AJ's high-density inks image well even on flexible face media, and two new light ink control profiles ensure top quality on both glossy and matte vinyl.

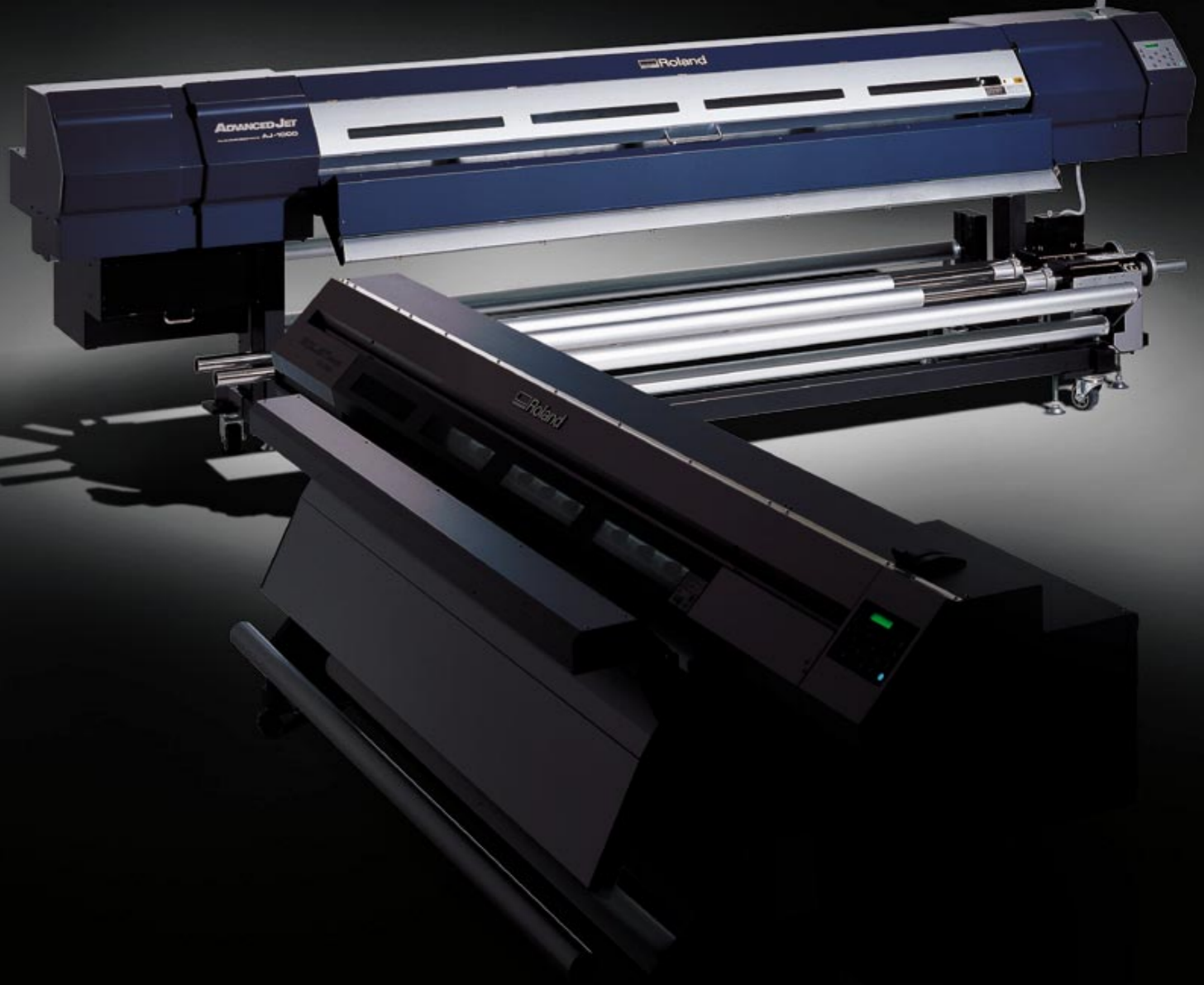
Brilliant, Durable EcoXtreme Ink

Roland EcoXtreme ink was developed exclusively for the AdvancedJET AJ series to provide outstanding color density, wider gamut, and rugged durability. Choose from two formulations — EcoXtreme for durability of up to three years outdoors, and EcoXtreme LT for more cost-effective, short-term applications. Both EcoXtreme ink sets are available in six colors (CMYKLaLm), and both produce vibrant images even in high-speed production modes on coated and uncoated media.

ADVANCED JET

Maximum Productivity

With print speeds of up to 90m²/hr (968 sqft/hr), the AdvancedJET AJ line has redefined the standards for high-volume production printing. Available in 74" and 104" models, the six-color AdvancedJET AJ delivers maximum productivity with world-class Roland engineering.



74" XJ-740
● 74" 6-color CMYKLaLm or 4-color CCMMYK wide-format inkjet printer

64" XJ-640
● 64" 6-color CMYKLaLm or 4-color CCMMYK wide-format inkjet printer



104" AJ-1000
● 104" 6-color CMYKLaLm industrial high-speed inkjet printer

74" AJ-740
● 74" 6-color CMYKLaLm industrial high-speed inkjet printer

Roland VersaWorks

ADVANCED JET
AJ-1000/AJ-740