

ADVANCED JET AJ-1000i/AJ-740i

SOLJET PRO III XJ-740/XJ-640

Specifications	ADVANCED JET		SOLJET PRO III	
	AJ-1000i	AJ-740i	XJ-740	XJ-640
Printing technology	Piezoelectric inkjet		Piezoelectric inkjet	
Media	Width	1220 to 2641 mm (48 to 104 in.)	210 to 1879 mm (8.3 to 74 in.)	210 to 1625 mm (8.3 to 64 in.)
	Thickness	Maximum 1.0 mm (39 mil) with liner		Maximum 1.0 mm (39 mil) with liner
	Roll outer diameter	Maximum 250 mm (9.8 in.)		Maximum 210 mm (8.3 in.)
	Roll weight	Maximum 100 kg (220 lb.)	Maximum 47 kg (103 lb.)	Maximum 40 kg (88 lb.)
Printing width	Core diameter	Maximum 2600 mm (102.3 in.)	Maximum 1870 mm (73.6 in.)	Maximum 1615 mm (63.6 in.) ¹⁾
	Types	Exclusive Roland EcoXtreme i or EcoExtreme LT cartridge		Exclusive Roland ECO-SOL MAX cartridge
Ink cartridges	Capacity	1 liter		220 cc or 440 cc
	Colors	6 colors (cyan, magenta, yellow, black, light cyan, and light magenta)		6 colors (cyan, magenta, yellow, black, light cyan, and light magenta) or 4 colors (cyan, magenta, yellow, and black)
Printing resolution (dots per inch)	Maximum 720 dpi		Maximum 1440 dpi	
Distance accuracy	Error of less than ±0.3 % of distance traveled, or ±0.3 mm, whichever is greater ²⁾		Error of less than ±0.3 % of distance traveled, or ±0.3 mm, whichever is greater ²⁾	
Media heating system ³⁾	Preheater and print heater, setting range for the preset temperature: 35 to 60°C (95 to 140°F)		Print heater, setting range for the preset temperature: 30 to 50°C (86 to 122°F)	
	Heating method (Used in combination with the blower fan), setting range for the preset temperature: 35 to 60°C (95 to 140°F)		Dryer, setting range for the preset temperature: 30 to 55°C (86 to 130°F)	
Media take-up system	Roll outer diameter	Maximum 250 mm (9.8 in.)		Maximum 250 mm (9.8 in.)
	Roll weight	Maximum 100 kg (220 lb.)		Maximum 50 kg (110 lb.)
Connectivity	Ethernet (10BASE-T/100BASE-TX, automatic switching)		Ethernet (10BASE-T/100BASE-TX, automatic switching)	
Power-saving function	Automatic sleep		Automatic sleep	
Power requirements	Printer: AC 200 to 240 V ±10 %, 10 A, 50/60 Hz	Printer: AC 200 to 240 V ±10 %, 8.5 A, 50/60 Hz	AC 100 to 120 V ±10 %, 13 A, 50/60 Hz or AC 220 to 240 V ±10 %, 7 A, 50/60 Hz	
	Dryer: AC 200 to 240 V ±10 %, 10 A, 50/60 Hz	Dryer: AC 200 to 240 V ±10 %, 8.5 A, 50/60 Hz		
Power consumption	During operation	Printer: Approx. 1600 W Dryer: Approx. 2300 W	Approx. 1600 W	
	Sleep mode	Approx. 60 W		Approx. 47 W
Acoustic noise level	During operation	70 dB (A) or less		64 dB (A) or less
	During standby	40 dB (A) or less		45 dB (A) or less
Dimensions (with stand)	4299 (W) x 1115 (D) x 1413 (H) mm (169.3 (W) x 43.9 (D) x 55.7 (H) in.)	3632 (W) x 1115 (D) x 1359 (H) mm (143 (W) x 43.9 (D) x 53.5 (H) in.)	3169 (W) x 1103 (D) x 1260 (H) mm (124.8 (W) x 43.4 (D) x 49.6 (H) in.)	2948 (W) x 1103 (D) x 1260 (H) mm (116 (W) x 43.4 (D) x 49.6 (H) in.)
	Weight (with stand)	598 kg (1319 lb.)	478 kg (1050 lb.)	225 kg (495 lb.)
Environmental	Power on	Temperature: 20 to 32°C (68 to 90°F), humidity: 35 to 80 % (no condensation)		Temperature: 15 to 32°C (59 to 90°F) 20°C (68°F) or more recommended, humidity: 35 to 80 %RH (non-condensing)
	Power off	Temperature: 5 to 40°C (41 to 104°F), humidity: 20 to 80 % (no condensation)		Temperature: 5 to 40°C (41 to 104°F), humidity: 20 to 80 %RH (non-condensing)
Accessories	Power cords, roll shafts, end caps, spacers, media reinforcement pipe, paper tube, drain bottle, media gauge, media clamps, hexagonal wrenches, Head-unit tool, cleaning kit, syringe, tube, maintenance liquid cartridge, software RIP, Roland-PrintServer CD-ROM, User's Manual, Setup Guide, Roland-PrintServer Network Settings Guide		Stand, power cord, media clamps, media flanges, replacement blade for separating knife, cleaning kit, software RIP, and User's Manual etc.	

¹⁾ The length of printing is subject to the limitations of the program.
²⁾ At Roland PET film, print travel: 1 m, temperature: 20°C (68°F), humidity: 50 %, not assured when the print heater or dryer is used.
³⁾ At Roland PET film, print travel: 1 m, temperature: 25°C (77°F), humidity: 50 %, not assured when the print heater or dryer is used.
⁴⁾ Warm-up is required after power-on. This may require 5 to 20 minutes, depending on the operating environment. Depending on the ambient temperature and media width, it may not reach a preset temperature.

Roland VersaWorks System Requirements

Operating system	Windows Vista® Ultimate Service Pack 1 or Business Service Pack 1 (32-bit edition), Windows Vista® Ultimate or Business (32-bit edition), or Windows® XP Professional Service Pack 2 or 3, or Windows® 2000 Service Pack 4
CPU	2.0 GHz or faster Pentium 4 recommended
RAM	1 GB or more recommended (Windows Vista®: 2 GB or more recommended)
Video card and monitor	A resolution of 1280 x 1024 or more recommended 40 GB or more recommended
Free hard-disk space	40 GB or more recommended
Optical drive	DVD-ROM drive

Options for Advanced JET AJ-1000i/AJ-740i

Mesh Printing Unit	MU-1000 For AJ-1000i
	MU-740 For AJ-740i
EcoXtreme i Ink	AI3-MG Magenta, 1000 cc
	AI3-YE Yellow, 1000 cc
	AI3-CY Cyan, 1000 cc
	AI3-BK Black, 1000 cc
	AI3-LC Light cyan, 1000 cc
	AI3-LM Light magenta, 1000 cc
EcoXtreme LT Ink	AI2-MG Magenta, 1000 cc
	AI2-YE Yellow, 1000 cc
	AI2-CY Cyan, 1000 cc
	AI2-BK Black, 1000 cc
	AI2-LC Light cyan, 1000 cc
	AI2-LM Light magenta, 1000 cc
Cleaning liquid	AI-CL 1 pc, 1000 cc
	AI-ML 1 pc, 500 cc

Options for SOLJET PRO III XJ-740/XJ-640

ECO-SOL MEDIA	SPVDB-1270 PVC banner, 1270 mm x 20 m (50' x 65ft)
	SP-M-1270 Matte PET film, 1270 mm x 30 m (50' x 98ft)
	SPFL-1300 Backlit film, 1300 mm x 30 m (51' x 98ft)
	SP-SG-1270G PET semi gloss, gray adhesive, 1270 mm x 30 m (50' x 98ft)
	SP-SG-1270R PET semi gloss, removable adhesive, 1270 mm x 30 m (50' x 98ft)
	SOA-SPPC-40-127 White glossy photo paper, 1270 mm x 40 m (50' x 131ft)
ECO-SOL MAX Ink	SPH-PPH-40-127 Photo matte paper, 1270 mm x 40 m (50' x 131ft)
	SOA-GVW-40-127 Calendered white vinyl adhesive, 1270 mm x 40 m (50' x 131ft)
	SV-G-1270G Gray adhesive vinyl, 1270 mm x 30 m (50' x 98ft)
	ESP-CL-1300 Clear PET film, 1300 mm x 30 m (51' x 98ft)
	SP-CL-1000T Clear PET film, adhesive, 1000 mm x 20 m (39' x 65ft)
	ESL3-4MG Magenta, 440 cc
Cleaning liquid	ESL3-4YE Yellow, 440 cc
	ESL3-4CY Cyan, 440 cc
	ESL3-4BK Black, 440 cc
	ESL3-4LC Light cyan, 440 cc
	ESL3-4LM Light magenta, 440 cc
	ESL3-4MG Magenta, 220 cc
Heater and blower	ESL3-4YE Yellow, 220 cc
	ESL3-4CY Cyan, 220 cc
Heater and blower	ESL3-4BK Black, 220 cc
	ESL3-4LC Light cyan, 220 cc
Heater and blower	ESL3-4LM Light magenta, 220 cc
	SI-CL 1 pc, 220 cc
Heater and blower	DU-740 For XJ-740
	DU-640 For XJ-640

Roland DG products that feature this environmental label meet the company's criteria for environmental consciousness. A set of standards based on ISO 14021 self-declaration type II. For more information, please visit www.rolanddg.com.



ISO 14001:2004 and ISO 9001:2000 Certified
 Roland pursues both environmental protection and continuous quality improvement. Under the philosophy of preserving the environment and human health, Roland is actively working to abolish organic solvents in production, to reduce and recycle waste, to reduce power use, and to purchase recycled products. Roland constantly strives to provide the most highly reliable products available.



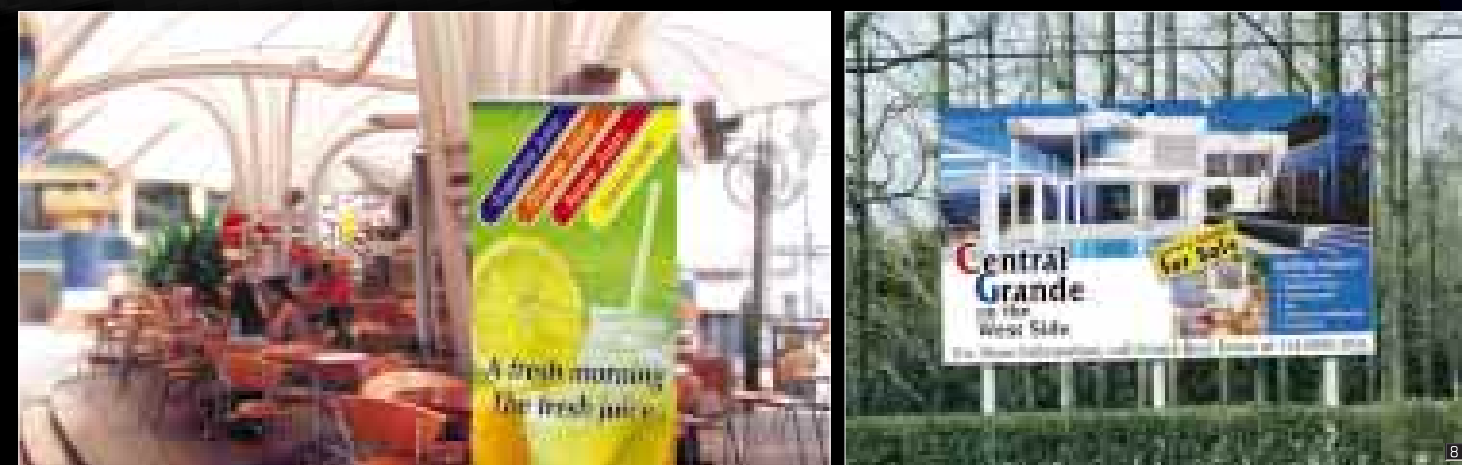
Roland reserves the right to make changes in specifications, materials or accessories without notice. Your actual output may vary. For optimum output quality, periodic maintenance to critical components may be required. Please contact your Roland dealer for details. No guarantee or warranty is implied other than expressly stated. Roland shall not be liable for any incidental or consequential damages, whether foreseeable or not, caused by defects in such products. Adobe, PostScript, PostScript 3 and the PostScript logo are trademarks of Adobe Systems Incorporated. All other trademarks are the property of their respective owners. Roland DG Corp. has licensed the MMP technology from the TPL Group.



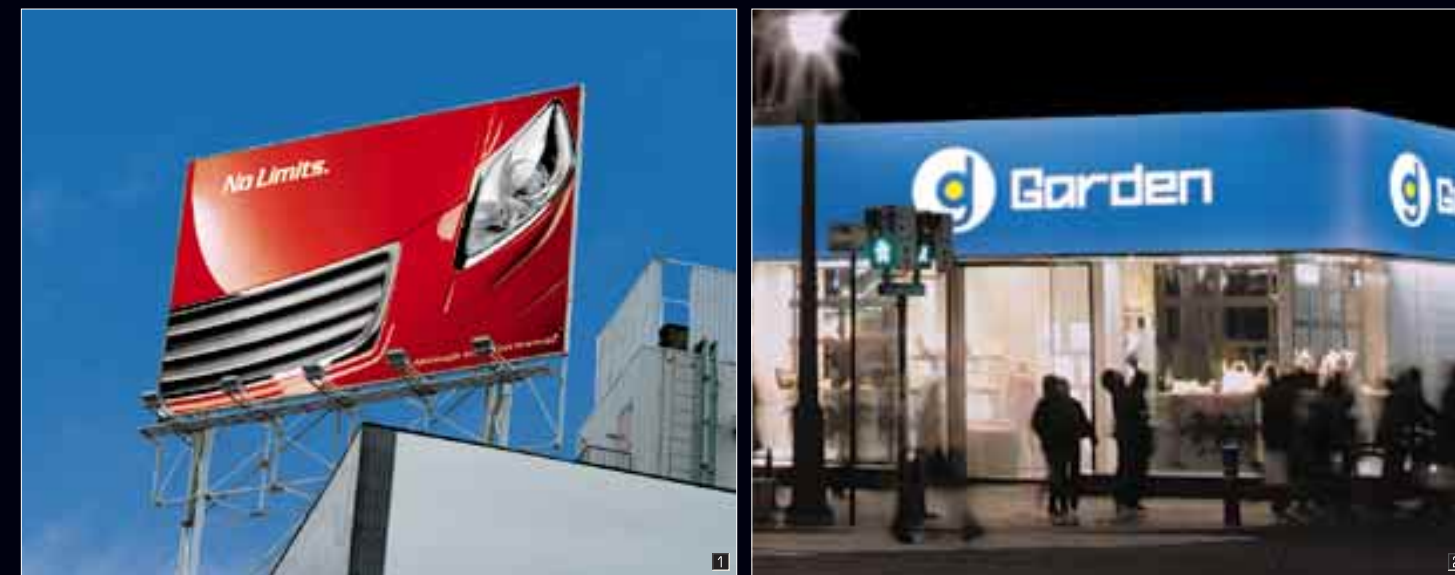
AUTHORIZED DEALER:

Printed in Japan. RDG-416070699 '09 MAR. C-3 G-S

www.rolanddg.com



- 1) Photorealistic skin tones
- 2) Flawless fine art giclées
- 3) Custom wall coverings
- 4) High-impact event posters
- 5) Beautiful outdoor banners
- 6) Vivid color backlit
- 7) Bold, colorful POP displays
- 8) Durable outdoor signs



Powerful Performance



- 1) Dynamic, durable billboards
- 2) High-density images on flexible face media
- 3) Spectacular fleet graphics and wraps
- 4) Exquisite custom retail decor
- 5) Exceptional soft signage for easy, effective event promotion
- 6) Rich, dense colors for superior tradeshow exhibits
- 7) Corporate advertising with impact
- 8) Stunning window displays

Exceptional Speed and Image Quality

The SOLJET PRO III XJ series is offered in 64" and 74" models, combining high-speed performance and superior image quality for the ultimate in six- or four-color digital printing.



SOLJET PRO III
XJ-740/XJ-640

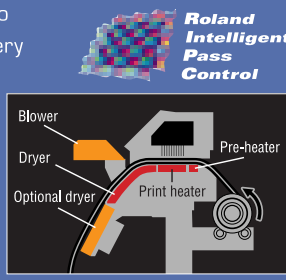
SOLJET PRO III

Optimum Productivity and Low Running Costs

Available in 64" and 74" models, the six-color (CMYKLCm) or four-color (CCMMYK) XJ series builds on Roland's renowned SOLJET technology to achieve exceptional image quality at higher print speeds. With a maximum print speed of 42.6m²/hr (458.61sqft/hr), the XJ is designed for production printing of indoor and outdoor graphics including banners, signs, point of purchase displays, vehicle graphics, backlit displays, event graphics and more. The XJ series supports a wide variety of media including vinyl, banner, photo paper, poster paper and canvas. For even greater productivity, the XJ features an automated maintenance system that saves valuable ink and time, resulting in lower overall running costs. The XJ's in-line print head configuration eliminates the need for lengthy calibration procedures as well.

Outstanding Visual Impact

The XJ series prints at up to 1440 x 1440 dpi resolution in dense, rich colors for indoor and outdoor graphics that look great up close and at a distance. Thanks to Roland Intelligent Pass Control technology, the XJ has been optimized to achieve unparalleled image quality in every print mode and produces flawless skin tones, high-contrast images, and solid colors with no traces of banding even at the highest print speeds. A built-in tri-heater system increases media receptiveness for maximum ink brightness and fastness.



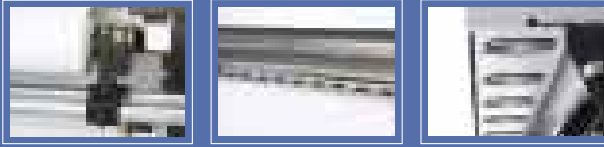
Exceptional Print Quality with ECO-SOL MAX Ink

ECO-SOL MAX eco-solvent ink delivers high color density and a wide gamut for exceptional images print after print. ECO-SOL MAX performs on a wide range of both coated and uncoated media, including backlit film, for increased versatility. Fast-drying and scratch-resistant, ECO-SOL MAX produces prints that dry quickly for easy handling throughout the production and finishing processes. Packaged in no-mess 220 and 440 cc cartridges, ECO-SOL MAX is virtually odorless for maximum convenience and comfort.



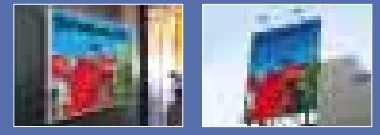
Added Features for Maximum Performance

The XJ series offers numerous advanced features for high-volume printing. Rigid construction and a heavy-duty take-up system support large media rolls weighing up to 47kg (103.6lbs). Easy access media shafts make it convenient to load even the heaviest media. Additional system enhancements include improved pinch rollers, grit rollers and additional grit power for flawless media feeding and tracking. Extended built-in media edge clamps prevent media curling and ragged edges. Media flanges are included as well for precision media tracking through long unattended production runs. A high-speed network board supports rapid data transfers, and an optional dryer/blower unit further expedites the production process.



Powerful VersaWorks RIP Software

Included in both the AJ-i and XJ series, Roland VersaWorks RIP was written from the ground up to be easy to use while offering advanced features including the Max Impact color management preset, the Roland Color System for precision spot color matching, and Variable Data Printing for custom prints with variable data.

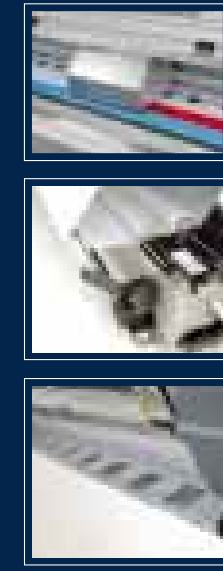


The Max Impact preset produces deeper, more vivid blues and reds, the fundamental colors for outdoor graphics, while preserving the overall color balance required for beautiful, photorealistic images. Or you can choose the default preset to faithfully reproduce human skin tones, pastel as well as natural colors, and metallic surfaces with superb gradations. Built on an Adobe Postscript engine, VersaWorks includes a wide variety of convenient layout, edit and print functions, and allows users to import files from popular design programs and preview jobs on screen. VersaWorks also includes more than 150 ICC profiles for reliable results the first time and every time. The Roland@NET automated update feature ensures ongoing access to the latest VersaWorks version and profiles available.



High-Speed Performance

Designed for high-volume printing and rush jobs, the AJ-i produces billboards, banners, backlit, fleet and vehicle graphics, and point of purchase displays at a maximum print speed of up to 90 m²/hr (968 sqft/hr). With 72 mm-wide heads, 510 nozzles per line and 35 pl per dot, the AJ-i offers superior image quality at 45 m²/hr (484 sqft/hr). With Roland Intelligent Pass Control, the AJ-i achieves up to 25 %* higher productivity for banner printing in standard print mode. For example, the AJ-i can print five rolls of banner measuring 2.5 m (8.2') wide by 50 m (164') long in standard print mode (bi-direction) in the same time it took the previous model to print just four rolls. Additional performance features, including a heavy-duty tension-controlled take-up system for rolls weighing up to 100 kg (220 lbs), make the AJ-i ideal for long production runs and unattended printing. A powerful drying system quickly dries ink and media for high-speed applications.



Superior Image Quality

The addition of Roland Intelligent Pass Control allows the AJ-i to produce sharp, vivid and solid images with smoother gradations and virtually no banding. With a maximum print resolution of 720 x 720 dpi, the AJ-i series produces brilliant six-color CMYKLCm graphics with superior outdoor graphics. In addition, feed calibration can be adjusted immediately at any time during the printing process to reduce media waste. The AJ-i's high-density inks image well even on flexible face media, and top quality on both glossy and matte vinyl.



Brilliant, Durable EcoXtreme Inks

Exclusively for the AdvancedJET AJ-i series, the latest Roland EcoXtreme i ink provides outstanding color density, wide gamut and rugged durability while dramatically reducing odor. Choose from two formulations — EcoXtreme i for durability of up to three years outdoors, and EcoXtreme LT for more cost-effective, short-term applications. Both EcoXtreme ink sets are available in

ADVANCED JET

six colors (CMYKLCm). EcoXtreme inks offer exceptional bonding with uncoated banner substrates and tarpaulin, as well as enhanced scratch and alcohol resistance for outstanding outdoor durability.



Minimum Maintenance and Ownership Costs

The price and installation costs of many wide and grand-format printers can run as high as the price of an expensive house or yacht. By comparison, an AJ-i can be purchased and installed for a fraction of this cost. Operational costs for the AJ-i are lower as well due to an innovative automated intelligent maintenance system that saves ink and reduces down time. This advanced system performs routine maintenance tasks automatically, eliminating the need for time-consuming daily manual cleanings. The AJ-i's intelligent maintenance system even adjusts the maintenance schedule automatically depending on the room temperature. As a result, manual cleaning around the print head and capping station is required only every two weeks.

Convenient Optional Mesh Printing Unit

The AJ-i's versatility can be further enhanced with the optional MU Mesh Printing Unit for economical unlined mesh media. Custom engineered for the AJ-i, the MU is easy to attach and detach and features a built-in drainage system for easy removal of excess ink. Popular for a variety of indoor and outdoor applications, mesh is particularly well suited for graphics that may be exposed to excessive wind or any graphic calling for a unique sheer look. Unlined mesh offers many advantages over lined mesh. Unlined mesh is less expensive per square meter, easier to print, handle and transport, and produces no liner waste.

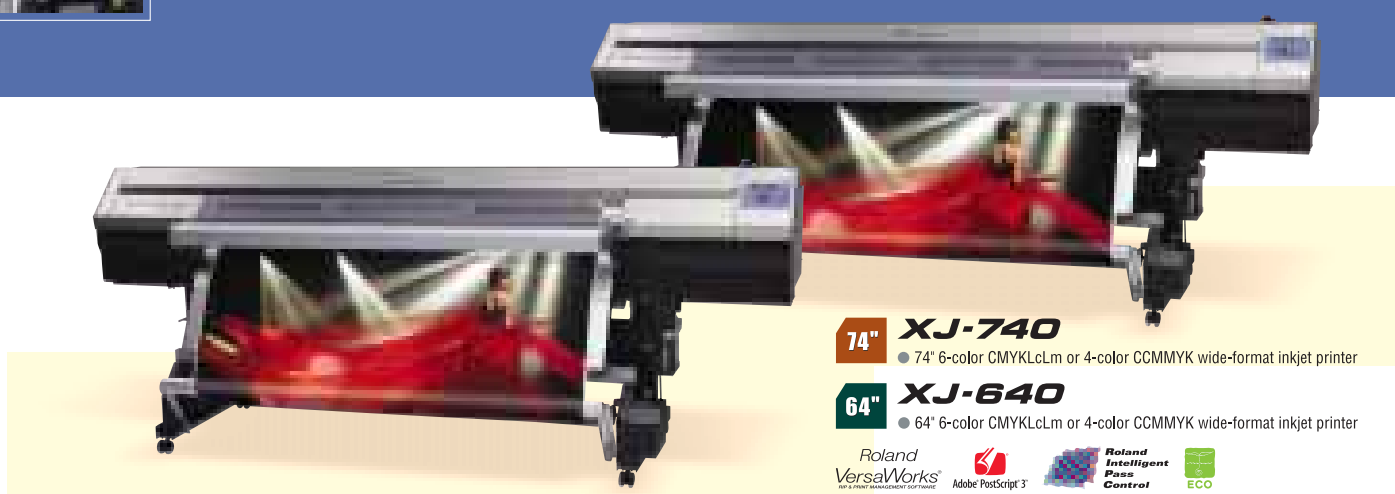


Maximum Productivity

The AdvancedJET AJ-i grand format line is ideal for high-volume production printing in excellent quality with innovative Roland Intelligent Pass Control. Available in 104" and 74" models, the six-color AdvancedJET AJ-i delivers maximum productivity with world-class Roland engineering.



ADVANCED JET
AJ-1000i/AJ-740i



74" XJ-740
● 74" 6-color CMYKLCm or 4-color CCMMYK wide-format inkjet printer

64" XJ-640
● 64" 6-color CMYKLCm or 4-color CCMMYK wide-format inkjet printer

Roland VersaWorks, Adobe PostScript 3, Roland Intelligent Pass Control, ECO



104" AJ-1000i
● 104" 6-color CMYKLCm industrial high-speed inkjet printer

74" AJ-740i
● 74" 6-color CMYKLCm industrial high-speed inkjet printer

Roland VersaWorks, Adobe PostScript 3, Roland Intelligent Pass Control, ECO